

FPB40

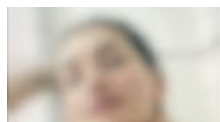
Porta battente / Hinge door H 2000 mm

NELLA FPB40 LA PORTA CHE MISURA MM 1000, 1100 E 1200 HA IL DOPPIO VETRO SIA ESSA POSIZIONATA ANGOLARE O A NICCHIA.

THE FPB40 DOORS THAT MEASURE MM 1000, 1100 AND 1200 HAS DOUBLE GLASS WHETHER IT IS POSITIONED IN A NICHE OR CORNER INSTALLATION.



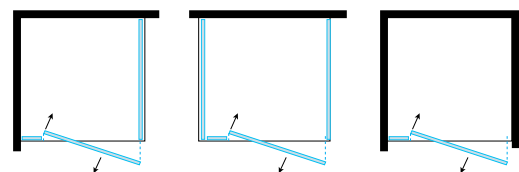
Cristallo trasparente
Transparent glass



Cristallo satinato
Frosted glass

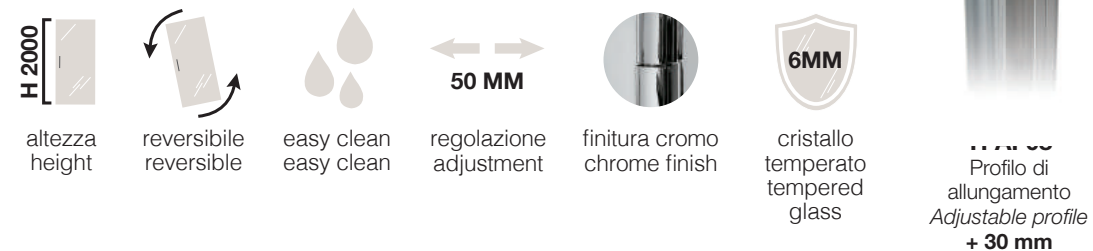


Cristallo Cincillà
Chinchilla glass

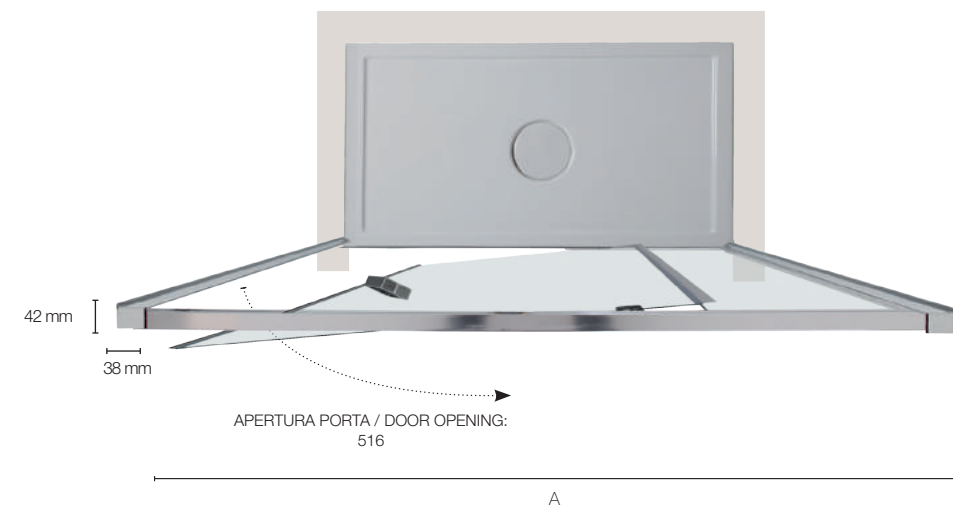


VERSIONE: ANGOLARE,
CENTRO PARETE E NICCHIA

VERSION: CORNER,
CENTER WALL AND NICHE

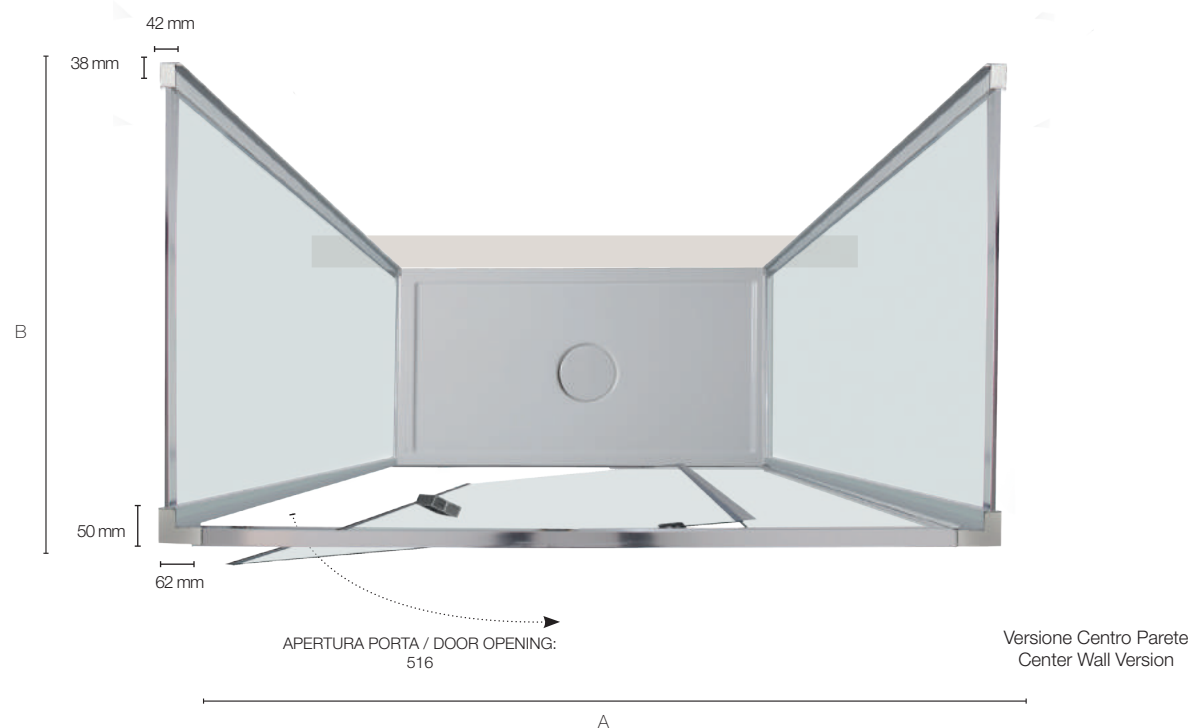
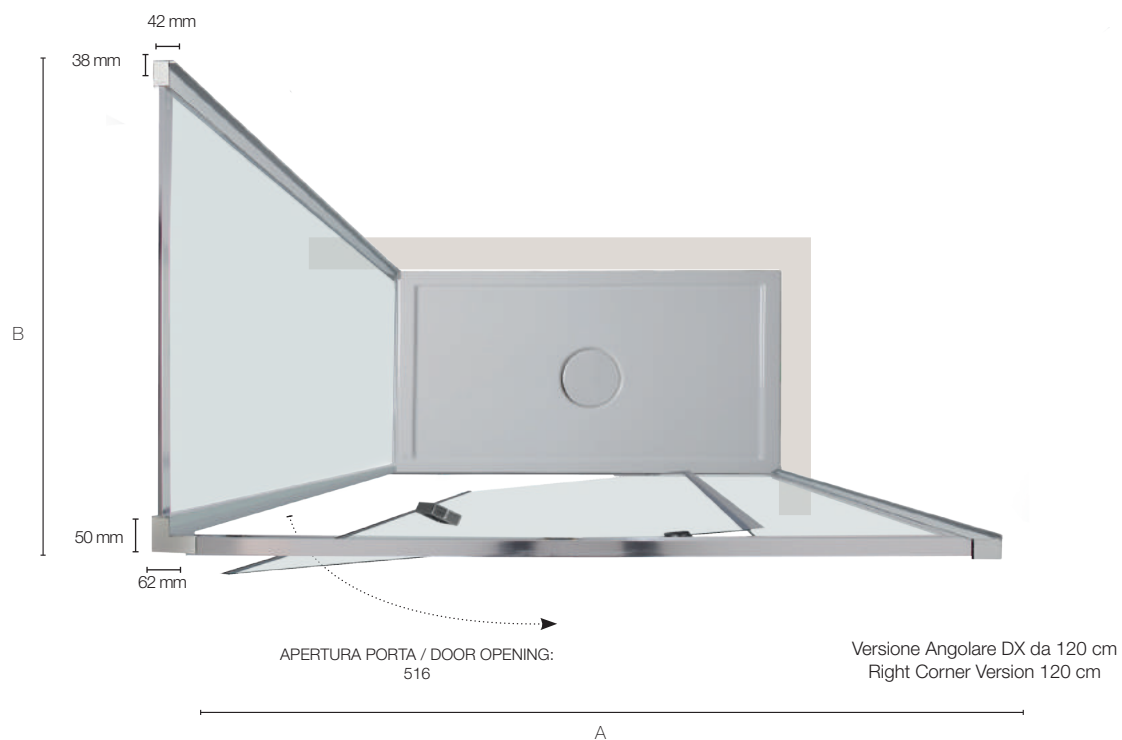


altezza height
reversibile reversible
easy clean easy clean
regolazione adjustment
finitura cromo chrome finish
cristallo temperato tempered glass
11773333 Profilo di allungamento Adjustable profile + 30 mm



DIMENSIONI PORTA (A) (NICCHIA)
DOOR SIZES (A) (NICHE)

Specifiche tecniche / Technical specifications				
L/W mm	H/H mm	Peso vetro kg	Apertura porta	Estensibilità mm
		Glass weight kgs	Door opening	Extension mm
1000	2000	34	516	950-1000
1100	2000	36	516	1050-1100
1200	2000	40	516	1150-1200



PORTA ABBINATA A LATO FISSO
DOOR MATCHED WITH FIXED PANEL

Specifiche tecniche / Technical specifications		
P/D mm	H/H mm	Estensibilità mm Extension mm
1000	2000	962-1010
1100	2000	1062-1110
1200	2000	1162-1210

DIMENSIONI LATO FISSO (B) FISSO
FIXED SIDE PANEL SIZE (B) FISSO

Specifiche tecniche / Technical specifications			
P/D mm	H/H mm	Peso vetro kg	Estensibilità mm
		Glass weight kgs	Extension mm
700	2000	22	665-715
800	2000	26	765-815
900	2000	28	865-915
1000	2000	30	965-1015

PORTA ABBINATA A 2 LATI FISSI
DOOR MATCHED WITH 2 FIXED PANELS

Specifiche tecniche / Technical specifications		
P/D mm	H/H mm	Estensibilità mm Extension mm
1000	2000	974-1020
1100	2000	1074-1120
1200	2000	1174-1220