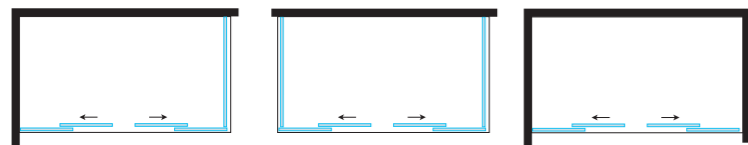


FPSC57

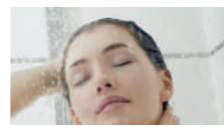
Porta scorrevole / Sliding door H 2000 mm



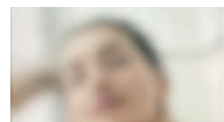
VERSIONE: ANGOLARE, CENTRO PARETE E NICCHIA

VERSION: CORNER, CENTER WALL AND NICHE

- altezza
height
- reversibile
reversible
- easy clean
easy clean
- regolazione
adjustment
- finitura cromo
chrome finish
- cristallo temperato
tempered glass
- profilo di allungamento
Adjustable profile
+ 30 mm



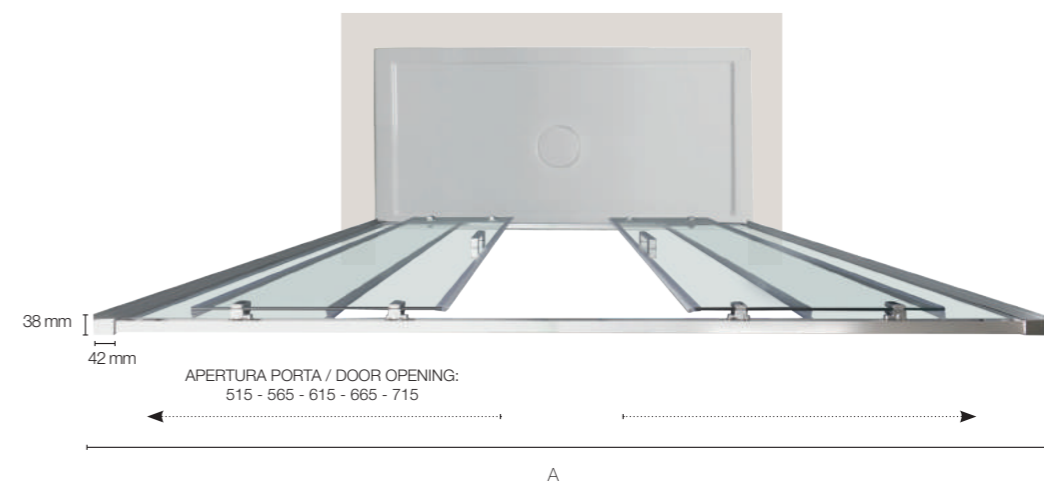
Cristallo trasparente
Transparent glass



Cristallo satinato
Frosted glass



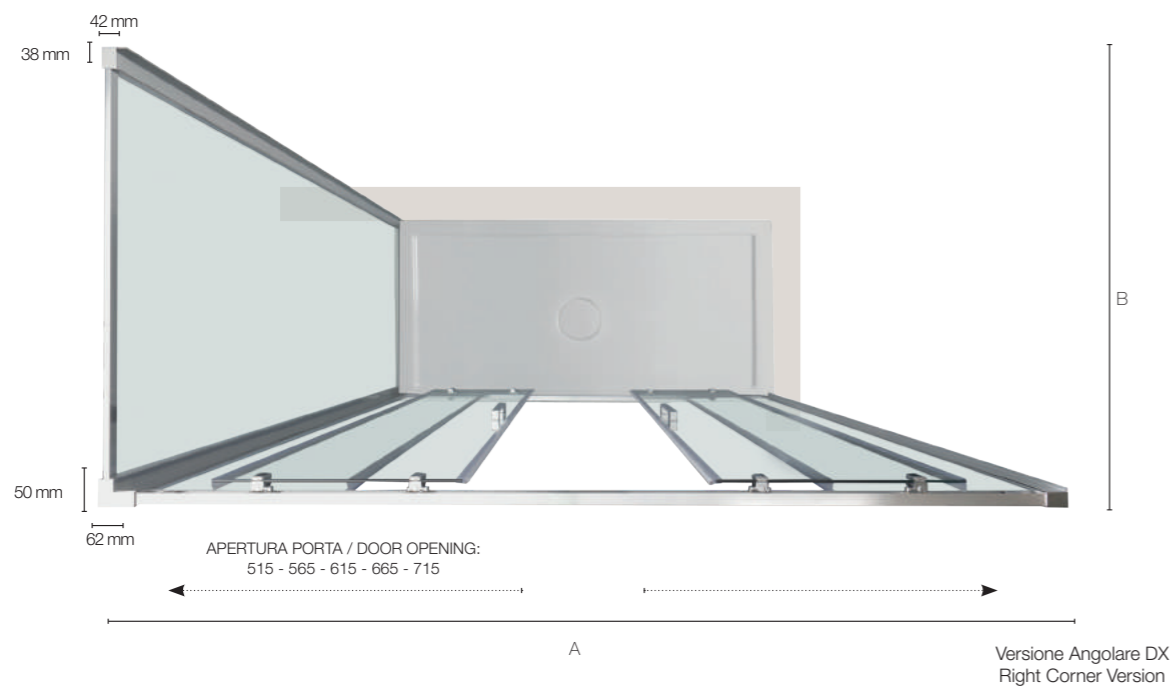
Cristallo Cincillà
Chinchilla glass



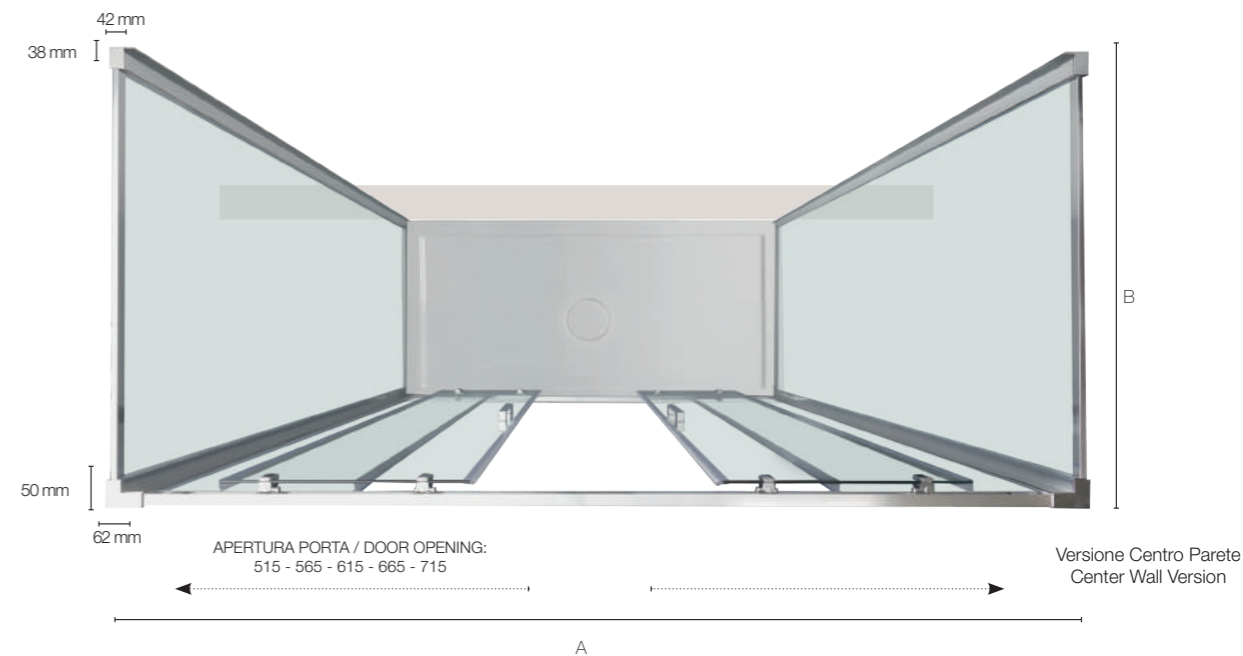
Versione Nicchia
Niche Version

DIMENSIONI PORTA (A) (NICCHIA) DOOR SIZES (A) (NICHE)

Specifiche tecniche / Technical specifications				
L/W mm	H/H mm	Peso vetro kg	Apertura porta	Estensibilità mm
		Glass weight kgs	Door opening	Extension mm
1400	2000	48	515	1350-1400
1500	2000	51	565	1450-1500
1600	2000	54	615	1550-1600
1700	2000	57	665	1650-1700
1800	2000	60	715	1750-1800



Versione Angolare DX
Right Corner Version



Versione Centro Parete
Center Wall Version

PORTA ABBINATA A LATO FISSO DOOR MATCHED WITH FIXED PANEL

Specifiche tecniche / Technical specifications		
P/D mm	H/H mm	Estensibilità mm
		Extension mm
1400	2000	1362-1410
1500	2000	1462-1510
1600	2000	1562-1610
1700	2000	1662-1710
1800	2000	1762-1810

DIMENSIONI LATO FISSO (B) FISSO FIXED SIDE PANEL SIZE (B) FISSO

Specifiche tecniche / Technical specifications			
P/D mm	H/H mm	Peso vetro kg	Estensibilità mm
		Glass weight kgs	Extension mm
700	2000	24	665-715
800	2000	27	765-815
900	2000	30	865-915
1000	2000	34	965-1015

PORTA ABBINATA A 2 LATI FISSI DOOR MATCHED WITH 2 FIXED PANELS

Specifiche tecniche / Technical specifications		
P/D mm	H/H mm	Estensibilità mm
		Extension mm
1400	2000	1374-1420
1500	2000	1474-1520
1600	2000	1574-1620
1700	2000	1674-1720
1800	2000	1774-1820