

Cod. **GR006.BI**

Vaso a terra scarico a parete. Trasformabile a pavimento tramite la curva tecnica VA079 fornita a richiesta. Installazione filo parete.

Scarico 4,5 / 3 Lt. Completo di fissaggi. Peso 24 kg

*Floor mounted pan with wall drain, turning into floor drain with the PVC pipe cod. VA079 supplied on demand.*

*Back to wall installation. Drain 4,5 / 3 Lt. Fixing kit included.*

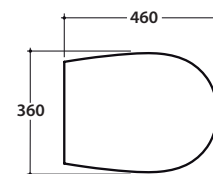


Cod. **GR019.BI**

**Coprivaso chiusura tradizionale**

Coprivaso in termoindurente

*Thermo-setting seat-cover.*



Cod. **GR020.BI**

**Coprivaso chiusura soft-close**

Coprivaso in termoindurente chiusura rallentata.

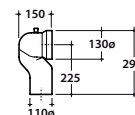
*Thermo-setting seat-cover with soft-closing system*



Cod. **VA079\***

Curva tecnica per lo scarico a pavimento  $\varnothing$  11.

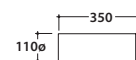
*Elbow pipe for floor drain  $\varnothing$  11.*



Cod. **VA076**

Raccordo per scarico a parete cm. 35

*Pipe for wall drain 35cm.*



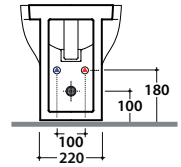
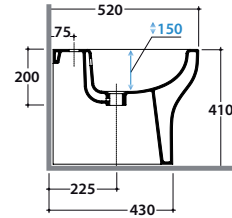
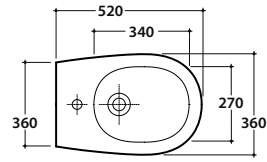
Cod. **VA132**

Riduttore flusso di scarico.

*Flow reductor.*

# GRACE BIDET GR011.BI

# GLOBO



Cod. **GR011.BI**

Bidet a terra monoforo. Installazione filo parete.

Completo di fissaggi. Peso 22 kg

*Floor mounted bidet one hole. back to wall installation. Fixing kit included.  
weight 22 Kg*