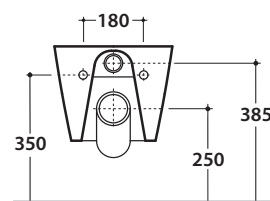
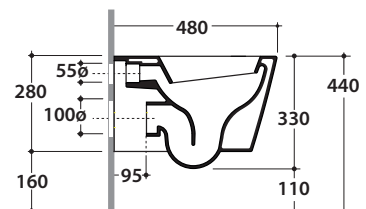
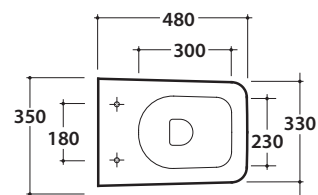


# INCANTHO VASO INS03.BI

# GLOBO



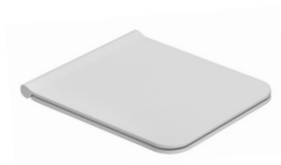
## Cod. **INS03.BI**

Vaso sospeso 48.33 con sistema di fissaggio nascosto.

Scarico 4,5/3 Lt. Peso 20 kg.

*Wall-hung WC 48.33 provided with hidden fixing system.*

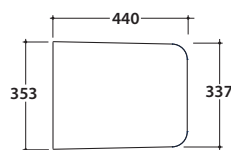
*Drain 4,5/3 Lt. Weight 20 kg.*



## Cod. **IN021BI**

Coprivaso rimovibile in duroplast con chiusura tradizionale. Peso 2,6 Kg

*Removable duroplast seat-cover with traditional closing system. Weight 2,6 Kg*



## Cod. **IN022BI**

Coprivaso rimovibile in duroplast con chiusura rallentata. Peso 2,6 Kg

*Removable duroplast seat-cover with soft-closing system. Weight 2,6 Kg*



## Cod. **VA132**

Riduttore flusso di scarico.

*Flow reductor.*



## Cod. **FI002**

Staffa di fissaggio a "L". Peso 2,5 kg.

*Fixing brackets for W/H sanitary. Weight 2,5 kg.*



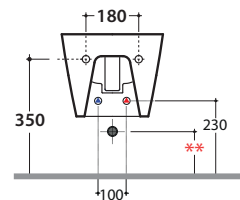
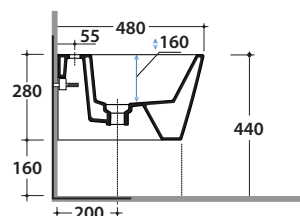
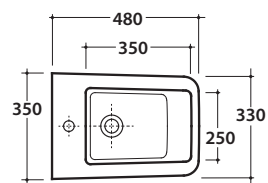
## Cod. **PU001**

Protezione antiurto e acustica. Peso 0,2 kg.

*Acoustic and crash protection. Weight 0,2 kg.*

# INCANTHO BIDET INS10.BI

# GLOBO



\*\* per installazione con / for installation with:  
-sifone a "S"/siphon "S": mm 140  
-sifone SF052/siphon SF052: mm 160

Cod. **INS10.BI**

Bidet sospeso 48.35 cm monoforo. Con sistema di fissaggio dal basso nascosto

Completo di fissaggi. Peso 28 Kg

Wall-hung bidet 48.35 cm. Provided with lower hidden fixing system

Fixing kit included. Weight 28 kg.



Cod. **FI012.BI**

Piletta up and down con tappo in ceramica

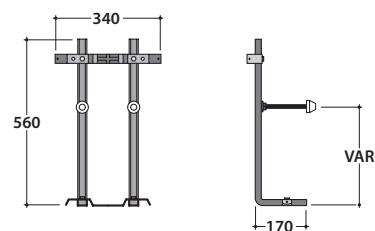
Click-clack drain in ceramic



Cod. **FI002**

Staffa di fissaggio a "L". Peso 2,5 kg.

Fixing brackets for W/H sanitary. Weight 2,5 kg.



Cod. **PU001**

Protezione antiurto e acustica. Peso 0,2 kg.

Acoustic and crash protection. Weight 0,2 kg.