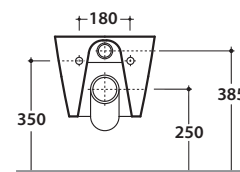
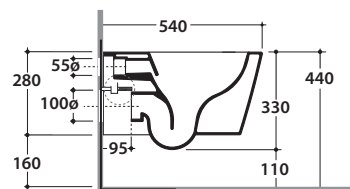
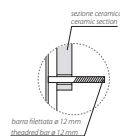
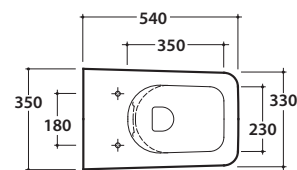


# INCANTHO VASO SOSPESO SENZABRIDA®

INS04.BI

CE EN 997:2015

# GLOBO



Effetto antibatterico su ceramica BATAFORM®  
Ceramic antibacterial effect BATAFORM®



Bagno di Colore



SENZABRIDA®



Prodotto smaltato con CERASLIDE®  
Glazed product with CERASLIDE®



Scarico ottimizzato a 4/2,6 litri  
Drain 4/2,6 lt.

Cod. **INS04.BI**

Vaso sospeso SENZABRIDA® 54.35 h 33 cm. Scarico 4 / 2,6 Lt. Completo di fissaggi. Peso 22 Kg  
Wall-hung Wc No rim 54.35 h 33 cm. Drain 4 / 2,6 Lt. Fixing kit included. Weight 22 Kg



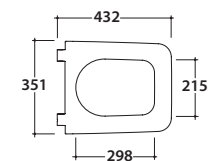
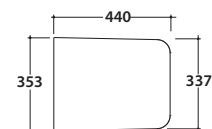
Copriwater con sistema di cerniere a sgancio rapido  
Seat-cover with hinge system to quick release



Trattamento antibatterico per sedili in versione bianco lucido  
Antibacterial treatment on toilet seats in shiny white

Cod. **IN019BI**

Copri vaso rimovibile in duroplast con chiusura tradizionale. Peso 2,5 Kg  
Removable duroplast seat-cover with traditional closing system. Weight 2,5 Kg



Cod. **IN020BI**

Copri vaso rimovibile in duroplast con chiusura rallentata. Peso 2,5 Kg  
Removable duroplast seat-cover with soft-closing system. Weight 2,5 Kg



Cod. **VA132**

Riduttore flusso di scarico.  
Flow reductor.



Cod. **PU001**

Protezione antiurto e acustica.  
Acoustic and crash protection.

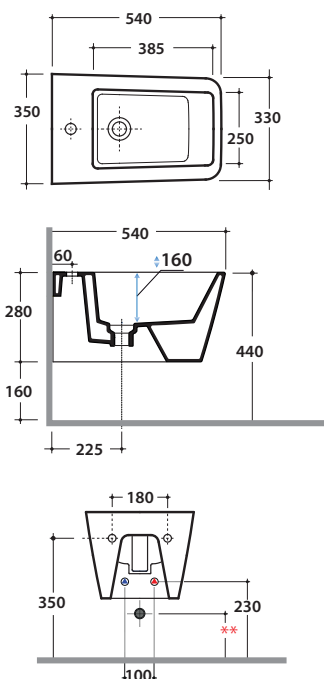


Cod. **FI002**

Staffa di fissaggio a "L". Peso 2,5 Kg  
Fixing brackets for W/H sanitary. Weight 2,5 Kg

# INCANTHO BIDET INS09.BI

# GLOBO



## Cod. **INS09.BI**

Bidet sospeso 54.35 cm . Con sistema di fissaggio dal basso nascosto  
Completo di fissaggi. Peso 21 kg  
*Wall-hung bidet 54.35 cm Provided with lower hidden fixing system.  
Fixing kit included. Weight 21 kg.*

\*\* per installazione con / for installation with:  
-sifone a "S"/siphon "S": mm 140  
-sifone SF052/siphon SF052: mm 120



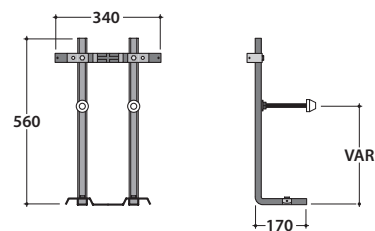
## Cod. **FI012.BI**

Piletta up and down con tappo in ceramica  
*Click-clack drain in ceramic*



## Cod. **FI002**

Staffa di fissaggio a "L". (Barra filettata  $\varnothing$ 12). Peso 2,5 kg.  
*Fixing brackets for W/H sanitary. Threaded bar  $\varnothing$ 12. Weight 2,5 kg.*



## Cod. **PU001**

Protezione antiurto e acustica. Peso 0,2 kg.  
*Acoustic and crash protection. Weight 0,2 kg.*