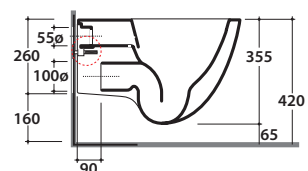
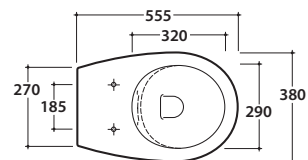


BOWL+ VASO SOSPESO SENZABRIDA®

SBS05.BI

CE EN 997:2015

GLOBO



Effetto antibatterico su ceramica BATAFORM®
Ceramic antibacterial effect BATAFORM®



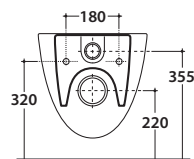
Prodotto smaltato con CERASLIDE®
Glazed product with CERASLIDE®



Scarico ottimizzato a 4/2,6 litri
Drain 4/2,6 lt

Cod. **SBS05.BI**

Vaso sospeso SENZABRIDA® 55.38 h35,5 cm. Scarico 4 / 2,6 Lt. Completo di fissaggi. Peso 18 Kg
Wall-hung Wc 55.38 h35,5 cm. No Rim. Drain 4 / 2,6 Lt. Fixing kit included. Weight 18 Kg



Coprivaso con sistema di cerniere a sgancio rapido
Seat-cover with hinge system to quick release



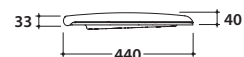
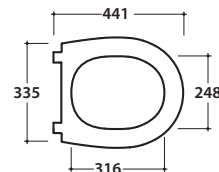
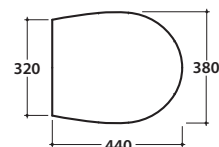
Trattamento antibatterico per sedili in versione bianco lucido
Antibacterial treatment on toilet seats in shiny white

Cod. **BPR19BI**

Coprivaso rimovibile in duroplast con chiusura tradizionale. Peso 3 Kg
Removable duroplast seat-cover with traditional closing system. Weight 3 Kg

Cod. **BPR20BI**

Coprivaso rimovibile in duroplast con chiusura rallentata. Peso 3 Kg
Removable duroplast seat-cover with soft-closing system. Weight 3 Kg



Cod. **VA132**

Riduttore flusso di scarico.
Flow reductor.



Cod. **PU001**

Protezione antiurto e acustica.
Acoustic and crash protection.



Cod. **FI002**

Staffa di fissaggio a "L". Peso 2,5 Kg
Fixing brackets for W/H sanitary. Weight 2,5 Kg

water label		
Average flushing volume (litres)		
Max. 3.5		3,38
Max. 4.5		
Max. 5.5		
Max. 6		
> 6		

www.europeanwaterlabel.eu