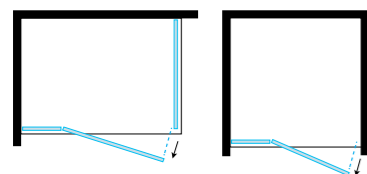


# TEPB43

Porta battente / Hinge door H 2000 mm



VERSIONE: ANGOLARE E NICCHIA

VERSION: CORNER AND NICHE

H 2000  
altezza  
height

reversibile  
reversible

easy clean  
easy clean

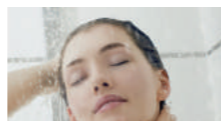
20 MM  
regolazione  
adjustment

finitura cromo  
chrome finish

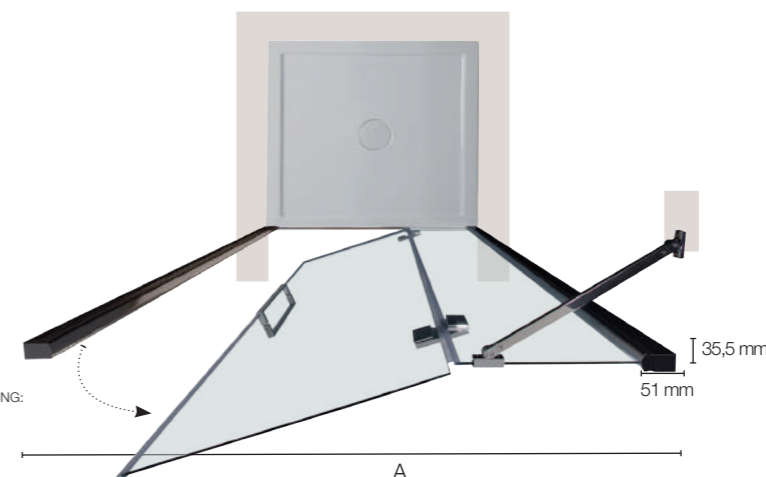
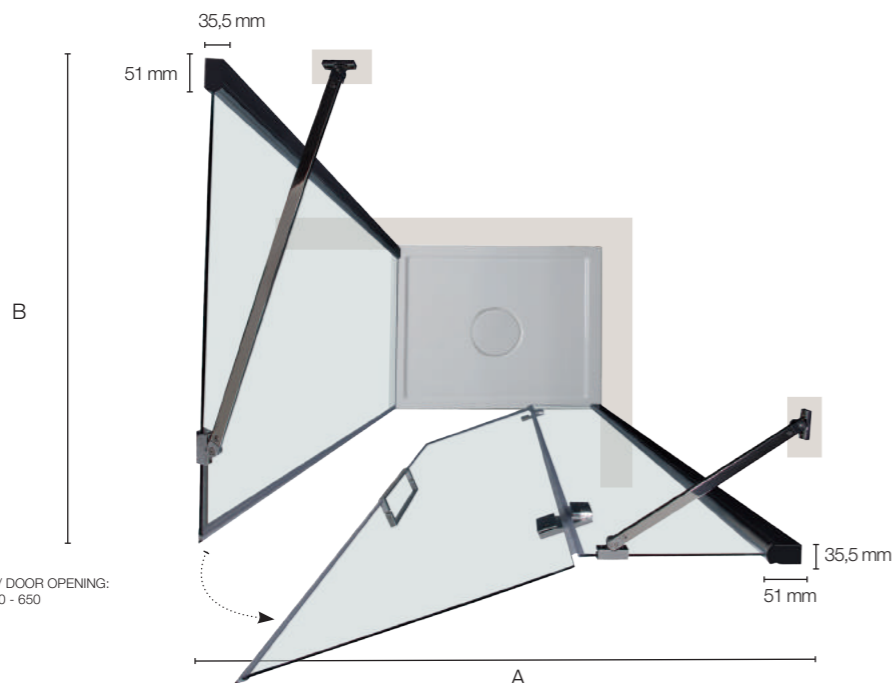
6MM  
cristallo temperato  
tempered glass



**NTPA01**  
Profilo di allungamento  
Adjustable profile  
+ 30 mm



Cristallo trasparente  
Transparent glass



## PORTA ABBINATA A LATO FISSO DOOR MATCHED WITH FIXED PANEL

Specifiche tecniche / Technical specifications		
P/D mm	H/H mm	Estensibilità mm Extension mm
850	2000	820-840
900	2000	870-890
1000	2000	970-990
1100	2000	1070-1090
1200	2000	1170-1190
1300	2000	1270-1290
1400	2000	1370-1390

## DIMENSIONI LATO FISSO (B) TELF FIXED SIDE PANEL SIZE (B) TELF

Specifiche tecniche / Technical specifications			
P/D mm	H/H mm	Peso vetro kg Glass weight kgs	Estensibilità mm Extension mm
700	2000	22	680-700
800	2000	25	770-790
900	2000	28	870-890
1000	2000	31	970-990

## DIMENSIONI PORTA (A) (NICCHIA) CON PROFILO DI CHIUSURA NTPC01 DOOR SIZE (A) (NICHE) WITH CLOSING PROFILE NTPC01

Specifiche tecniche / Technical specifications				
L/W mm	H/H mm	Peso vetro kg Glass weight kgs	Apertura porta Door opening	Estensibilità mm Extension mm
850	2000	30	550	860-900
900	2000	31	600	910-950
1000	2000	32	650	1010-1050
1100	2000	35	650	1110-1150
1200	2000	38	650	1210-1250
1300	2000	41	650	1310-1350
1400	2000	44	650	1410-1450

## DIMENSIONI PORTA (A) (NICCHIA) CON PROFILO DI CHIUSURA NTPC03 DOOR SIZE (A) (NICHE) WITH CLOSING PROFILE NTPC03

Specifiche tecniche / Technical specifications				
L/W mm	H/H mm	Peso vetro kg Glass weight kgs	Apertura porta Door opening	Estensibilità mm Extension mm
850	2000	30	550	825-850
900	2000	31	600	875-900
1000	2000	32	650	975-1000
1100	2000	35	650	1075-1100
1200	2000	38	650	1175-1200
1300	2000	41	650	1275-1300
1400	2000	44	650	1375-1400